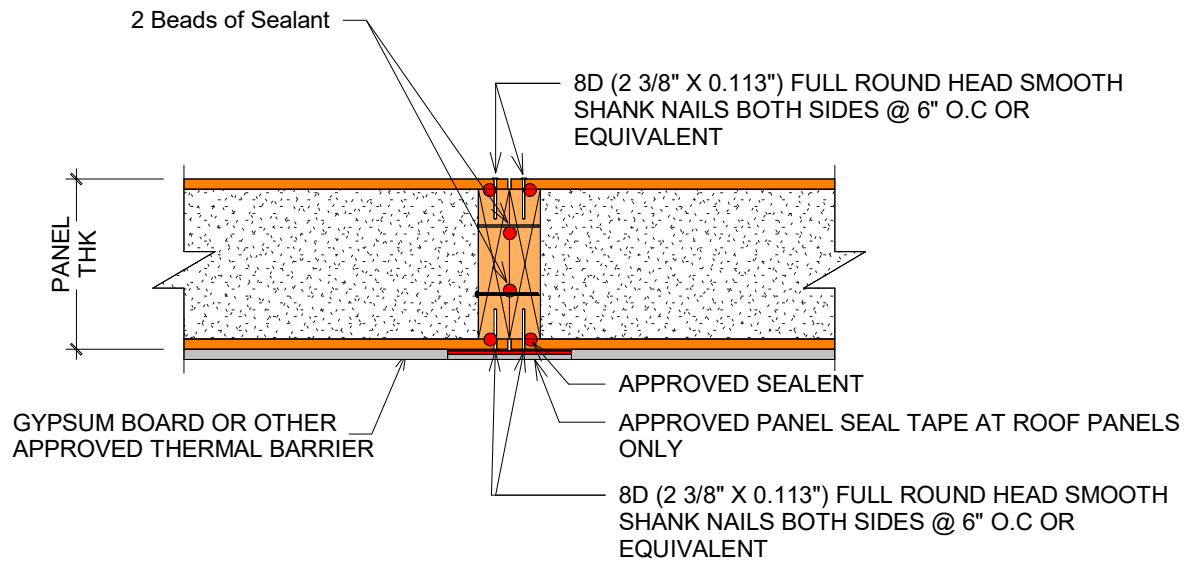
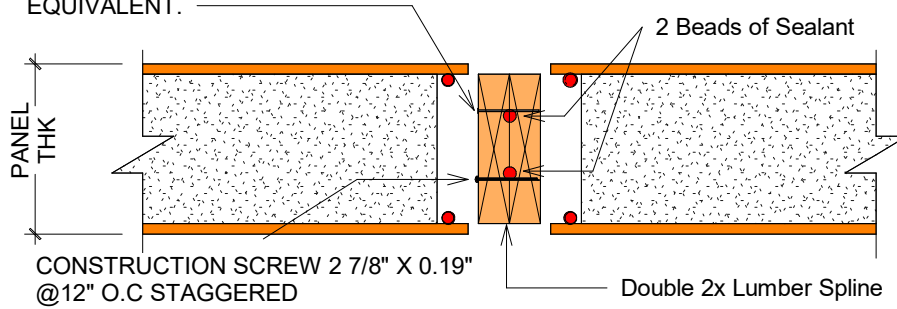
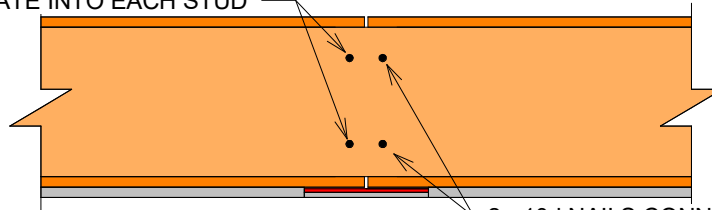




10D (3"X0.131") NAILS @ 12"
O.C, TWO ROWS OR
EQUIVALENT.



2 - 10d NAILS CONNECT THRU
TOP PLATE INTO EACH STUD



2 - 10d NAILS CONNECT THRU
TOP PLATE INTO EACH STUD

NOTES:

1. THE DETAILS IS TO BE USED WITH PREFLEX CONSTRUCTION DRAWINGS AND INSTALLATION GUIDE REFER TO PREFLEX CONSTRUCTION DRAWINGS FOR FINAL NAIL AND SCREW SCHEDULES.
2. ALL BUILDING COMPONENTS USED IN CONJUNCTION WITH THIS DETAIL SHALL BE IN COMPLIANCE WITH LOCAL CODE REQUIREMENT



SIP Joint / Double Lumber Spline_STD

SCALE: N.T.S

LAST UPDATE:

DIC, 01.2021

PF-600.3